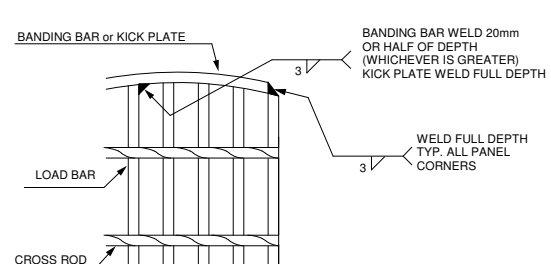
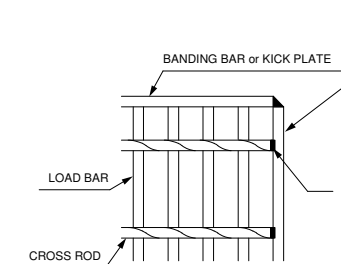


END BANDING

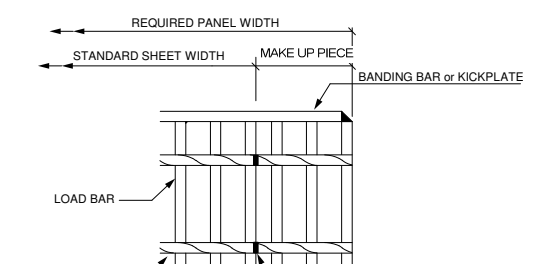


SPLAY BANDING

MAX DISTANCE BETWEEN WELDS 150mm

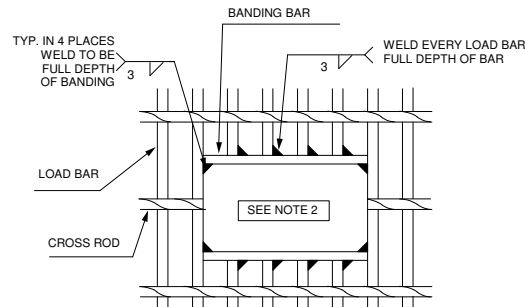


SIDE BANDING

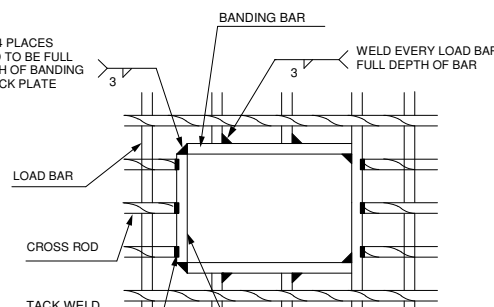


SIDE JOINING

WELD ONE SIDE OF EVERY 5th LOAD BAR FOR A & B GRATING
 WELD ONE SIDE OF EVERY 4th LOAD BAR FOR C & D GRATING
 WELD ONE SIDE OF EVERY 3th LOAD BAR FOR E & F GRATING
 WELD ONE SIDE OF EVERY LOAD BAR FOR DRAINAGE GRATING

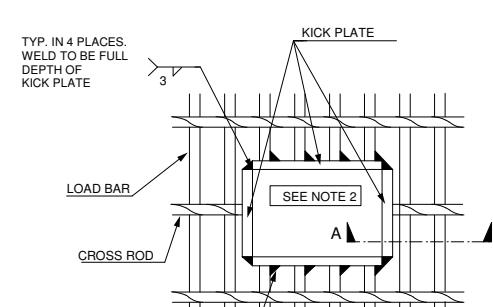


A, B, C & D PATTERNS

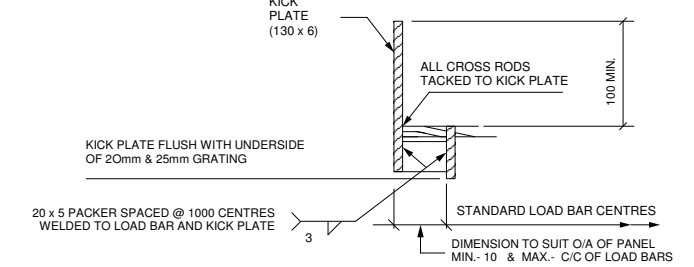
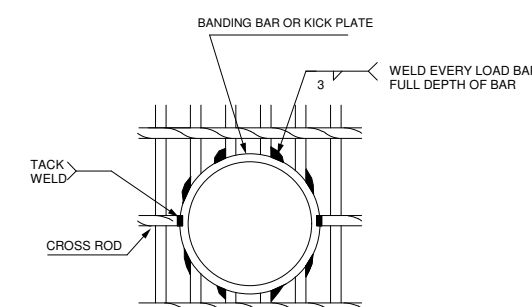


E & F PATTERNS

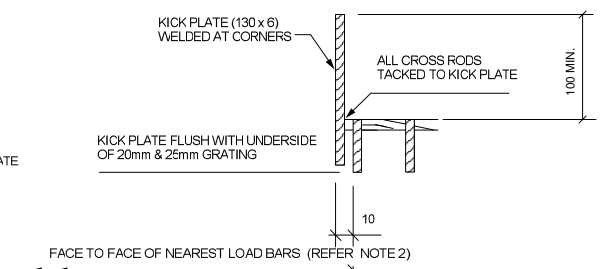
BAR ADDED WHEN DIMENSIONS EXCEED REQUIREMENTS OF NOTE 2



GRATING PENETRATIONS

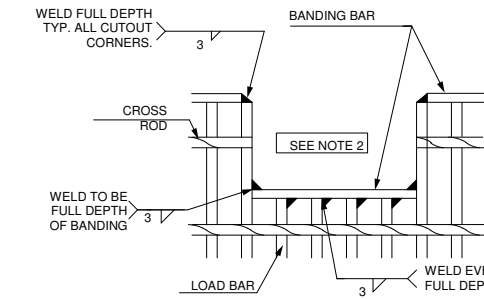


KICK PLATE WELDED PARALLEL TO LOAD BAR

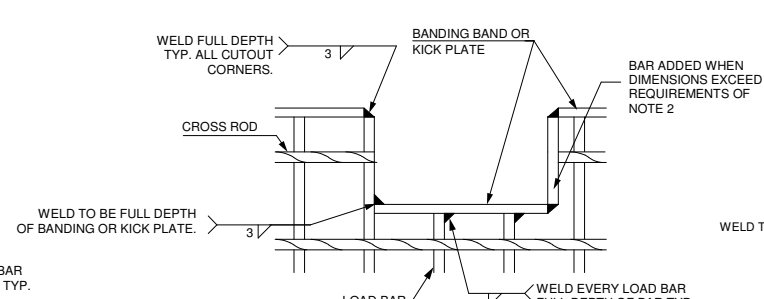


SECTION A-A

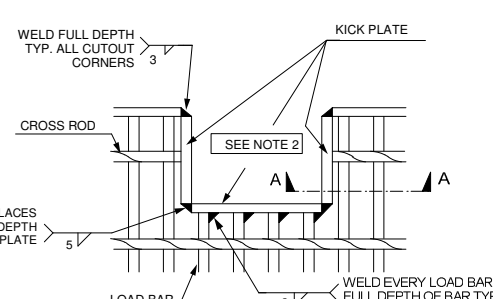
- NOTES**
1. THESE DETAILS TO APPLY U.O.N. ON GRATINGDETAIL AND/OR LAYOUT DRAWINGS
 2. ALL PENETRATIONS AND CUT-OUTS WILL BE ENLARGED TO THE NEAREST LOAD BAR WHEN THEY FALL WITHIN 40MM OF THAT LOAD BAR
 3. NO WELDS TO PROTRUDE BELOW U/S OF GRATING
 4. ALL BANDING BARS TO BE 5mm THICK
ALL KICK PLATE TO BE 6mm THICK
 5. PLAIN GRATING IS TO BE BANDED WITH PLAIN BARS
SERRATED GRATING IS TO BE BANDED WITH SERRATED BARS
 6. WELD SIZE 3mm IS MINIMUM REQUIREMENT



SERIES 1 OR SERIES 2

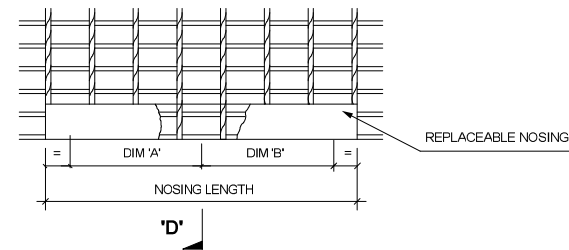


SERIES 3

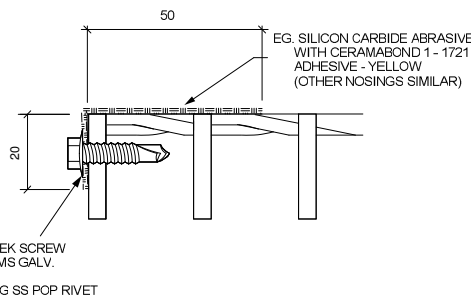


GRATING CUT - OUTS

PREFIX	LENGTH	DIM 'A'	DIM 'B'	
NAB	NFP	NPP	580	475 (NOMID FIXING)
NAB	NFP	NPP	730	300
NAB	NFP	NPP	880	375
NAB	NFP	NPP	1030	450
NAB	NFP	NPP	1180	525
CCDE eg. NAB590MG (ie. MS, GALV)				



'D'



SECTION 'D'

REPLACABLE NOSING DETAIL 'A'

FOR GENERAL RELEASE

REV	PARTICULARS	BY	DATE
1	TEXT REVISED & OBSOLETE NOSINGS REMOVED	TW	19/4/07
0	RE-NUMBERED FROM WWI-8-1r5	TW	19/5/05

WEBFORGE GROUP COMPANIES			
CLIENT: STANDARD FABRICATION			
DETAIL: PROCEDURES FOR STEEL GRATING PANELS			
WEBFORGE GRID TYPE	SURFACE TREATMENT	REQ'N No.	
DRAWN JL	CHK	CUST. O.R.	DRAWING No.
DATE 1/12/92	JOB No.	STD-001 1	