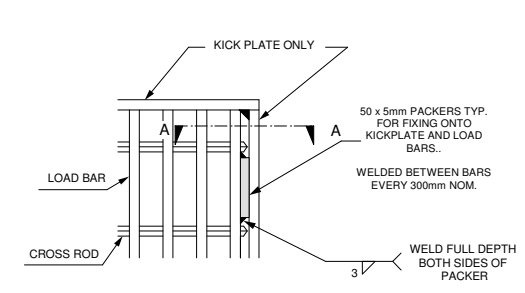
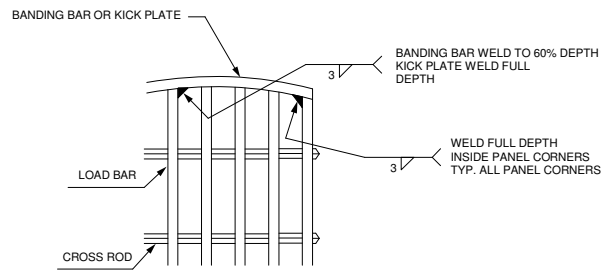
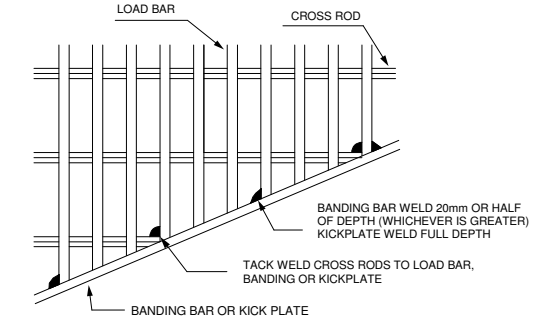


WELD ONE SIDE OF EVERY 5th LOAD BAR FOR A & B PATTERN
 WELD ONE SIDE OF EVERY 4th LOAD BAR FOR C & D PATTERN
 WELD ONE SIDE OF EVERY 3th LOAD BAR FOR F PATTERN
 CROSS RODS MAYBE CUT OUT AT WELD POINT IF START IS LESS THAN 20mm

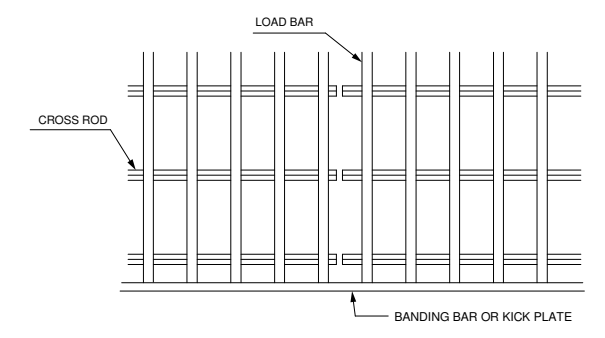
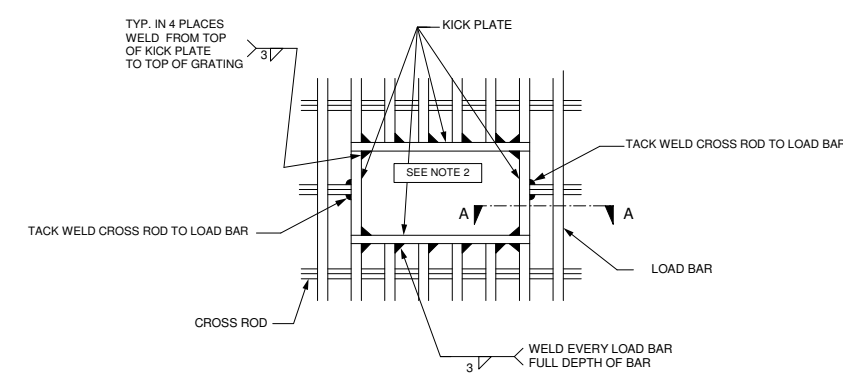
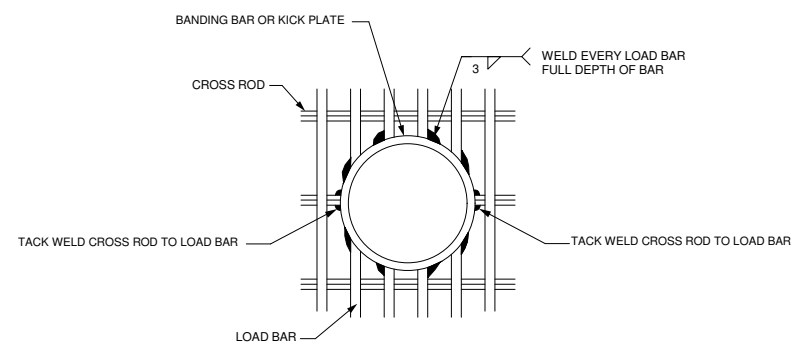
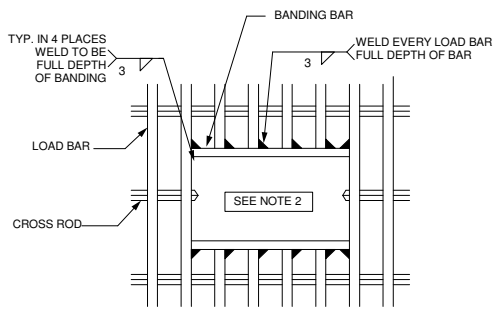
END BANDING



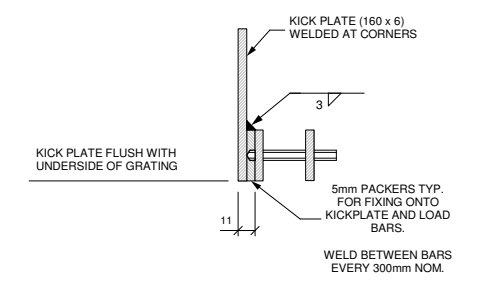
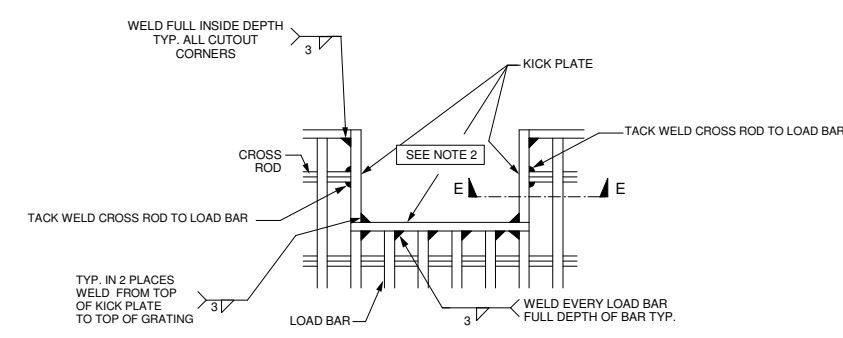
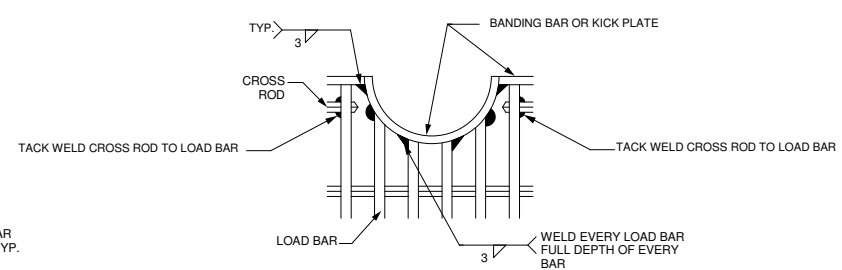
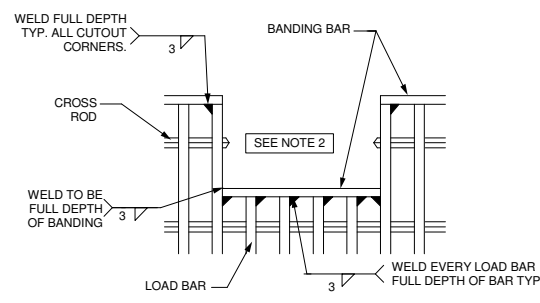
SIDE BANDING KICKPLATE ONLY



SPLAY BANDING
 MAX DISTANCE BETWEEN WELDS 150mm
 NON LOAD CARRYING
 IF LOAD CARRYING WELD TO EVERY LOAD BAR



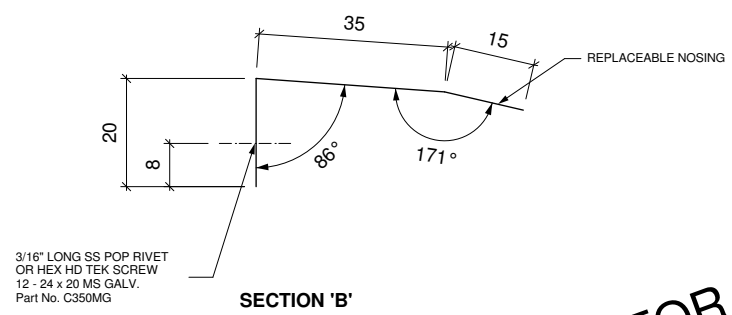
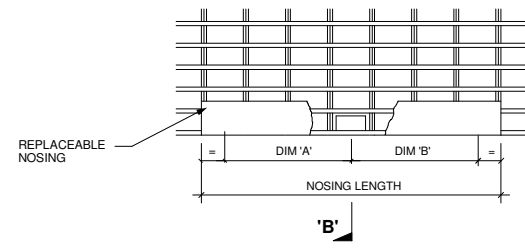
SIDE JOIN



SECTION 'A'

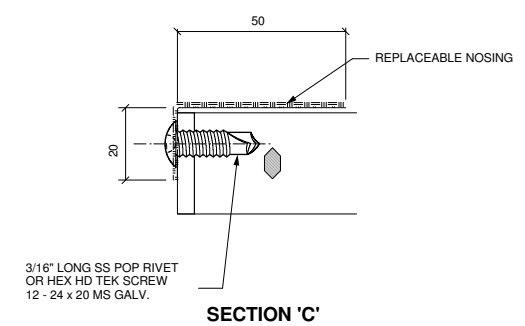
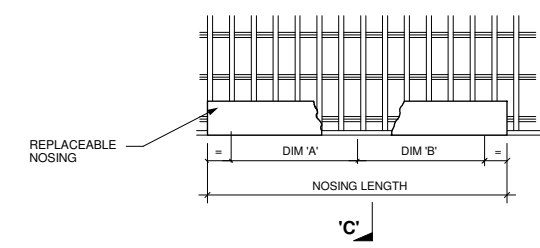
- NOTES**
1. THESE DETAILS TO APPLY U.O.N. ON GRATING DETAIL AND/OR LAYOUT DRAWINGS
 2. ALL PENETRATIONS AND CUT-OUTS WILL BE ENLARGED TO THE NEAREST LOAD BAR WHEN THEY FALL WITHIN 40MM OF THAT LOAD BAR
 3. NO WELDS TO PROTRUDE BELOW U/S OF GRATING
 4. ALL BANDING BARS TO BE 5mm THICK ALL KICK PLATE TO BE 6mm THICK
 5. PLAIN GRATING IS TO BE BANDED WITH PLAIN BARS SERRATED GRATING IS TO BE BANDED WITH SERRATED BARS
 6. WELD SIZE 3mm IS MINIMUM REQUIREMENT

PART NO.	LENGTH	DIM 'A'	DIM 'B'
NAB580AMY	580	475 (NO MID FIXING)	
NAB730AMY	730	300	325
NAB880AMY	880	375	400
NAB1030AMY	1030	450	475
NAB1180AMY	1180	525	550
NAB1260MM	1260	600	625



REPLACABLE NOSING DETAIL 'A'
 TYP. STAIR TREADS

3/16" LONG SS POP RIVET OR HEX HD TEK SCREW 12 - 24 x 20 MS GALV. Part No. C350MG



REPLACABLE NOSING DETAIL 'B'

3/16" LONG SS POP RIVET OR HEX HD TEK SCREW 12 - 24 x 20 MS GALV.

FOR GENERAL RELEASE

2	SIDE JOIN DETAIL ADDED	MR	29/10/09
1	UPDATES FOR WELDING DETAILS	TW	27/4/07
0	RE-NUMBERED FROM WW1-8-2r0	PM	19/5/05
REV	PARTICULARS	BY	DATE
WEBFORGE		WEBFORGE GROUP COMPANIES	
CLIENT:			
JOB: STANDARD FABRICATION			
DETAIL: PROCEDURES FOR ALUMINIUM GRATING PANELS			
WEBFORGE GRID TYPE	SURFACE TREATMENT	REQ'N No.	
DRAWN P.M.	CHK	CUST. Q.N.	DRAWING No.
DATE 5/7/09	JOB No.	STD-002	REV. 2