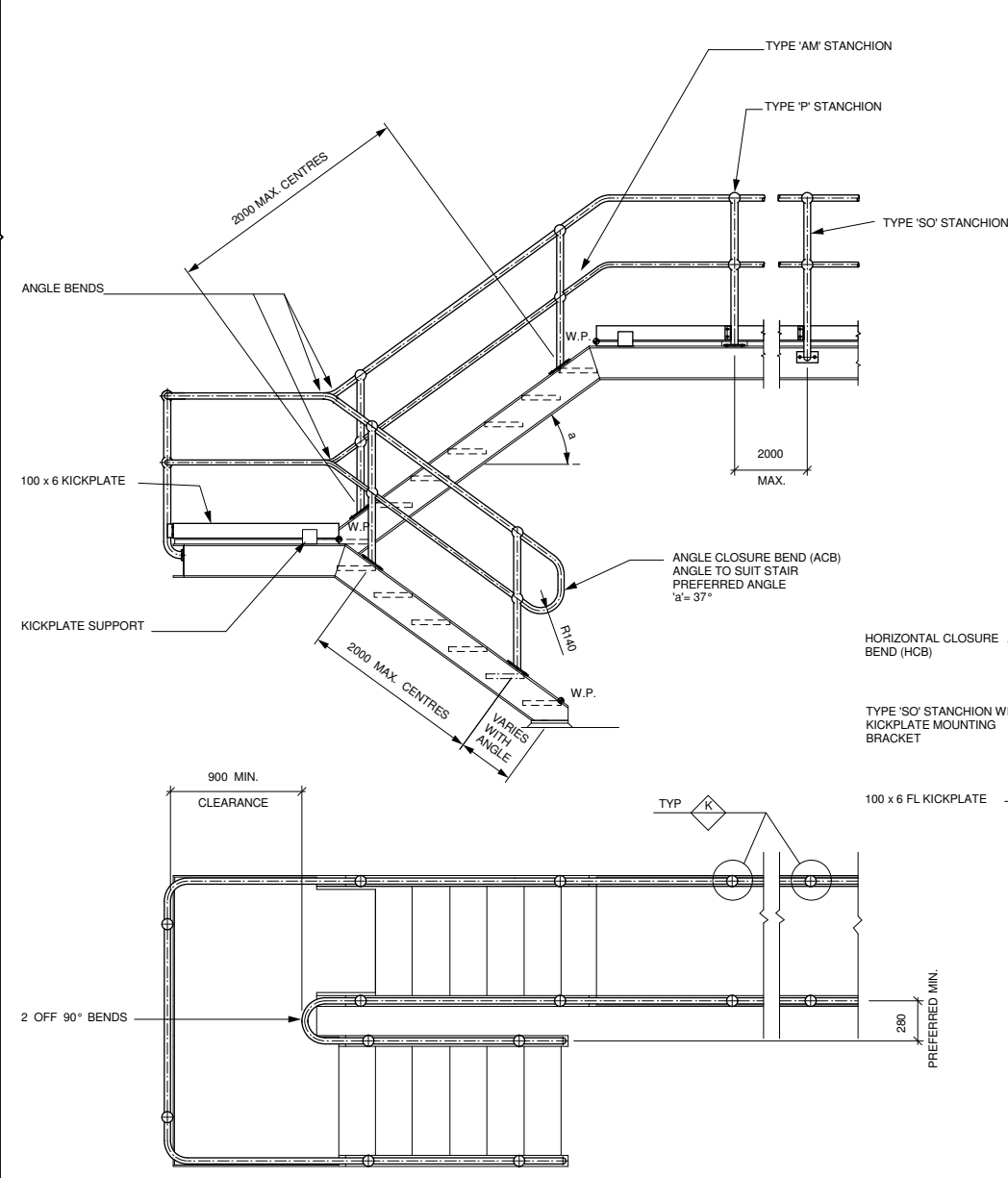
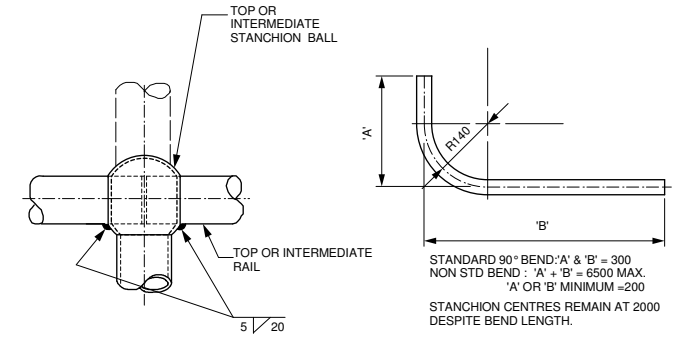


- NOTES**
- THIS DRAWING TO BE READ IN CONJUNCTION WITH GENERAL STRUCTURAL NOTES DRAWING.
  - THE DETAILS SHOWN ON THIS DRAWING ARE BASED ON REQUIREMENTS OUTLINED IN A.S.1657 (S.A.A. CODE FOR FIXED PLATFORMS, WALKWAYS, STAIRWAYS AND LADDERS) AND ARE MINIMUM ACCEPTABLE.
  - THE TYPE AND EXTENT OF HANDRAILS IS SHOWN ON THE DESIGN DRAWINGS.
  - CONTACT SURFACES OF HANDRAILS SHALL BE SMOOTH AND FREE FROM BURRS AND SHARP CORNERS.
  - ALL HANDRAILS ON THIS DRAWING ARE MONOWILLS HANDRAILING.
  - ALL HANDRAIL STANCHIONS AND RAILING TO BE HOT DIPPED GALVANISED U.O.N.
  - TYPE 'P' STANCHIONS ARE NOT RECOMMENDED WHERE CUT-OUTS IN THE FLOORING ARE REQUIRED FOR STANCHION INSTALLATION.
  - IF BENT PIPE IS NOT CONTINUOUS THROUGH STANCHION BALL, USE SPLICE (DETAIL P) OR FULLY WELD PIPE TO STANCHION.

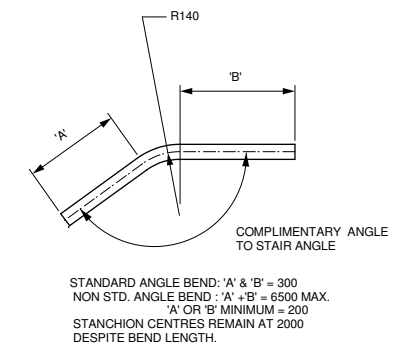
SIDE - 'S'    A    SIDE-OFFSET - 'SO'    B    PLATFORM - 'P'    C    WELDED - 'W'    D    SIDE CONVEYOR - 'SC'    E    CORED - 'C'    F    OFFSET CORED - 'C'    G    DRILLED ONE SIDE ONLY - 'DOSO'    H    ANGLE MOUNTED - 'AM'    J



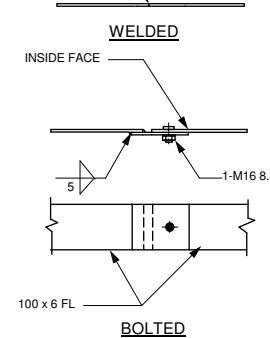
TYPICAL STAIR & PLATFORM HANDRAIL DETAILS



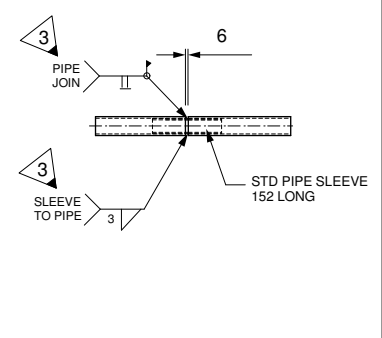
TYPICAL STANCHION/HANDRAIL JOINT    K    TYPICAL 90° STD. & NON STD. BENDS SEE NOTE 8.    L



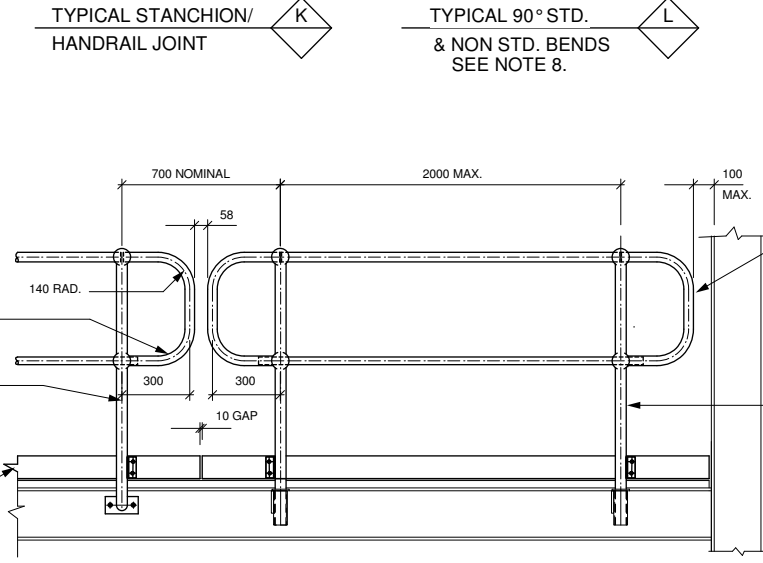
TYPICAL STANDARD & NON STANDARD ANGLE BENDS    M



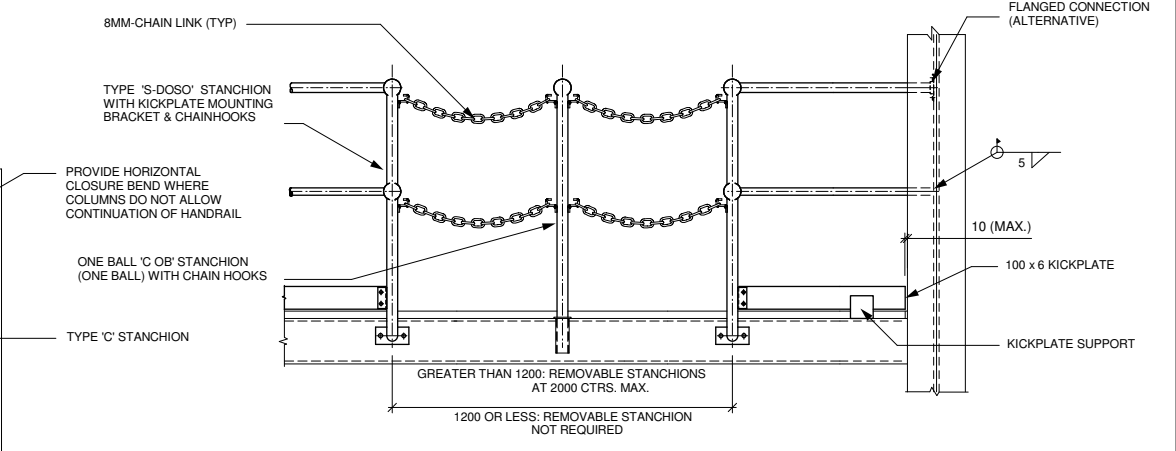
TYPICAL KICKPLATE SPLICE    N



TYPICAL HANDRAIL SPLICE    P



TYPICAL REMOVABLE PANEL    Q



TYPICAL REMOVABLE SAFETY CHAIN & RAIL/COLUMN CONNECTION DETAILS    R

FOR GENERAL RELEASE

1	RENAMED, O DETAIL, NOTE 8 & KP BRACKET DETAIL REVISED	MR	01/08/07
0	RE-NUMBERED FROM STD-018r3	TW	19/5/05
REV	PARTICULARS	BY	DATE
<p><b>WEBFORGE (WA)</b>          24 TENANT STREET, WELSHPOOL          WESTERN AUSTRALIA          A.C.N. 009 419 756          Phone (08) 9361 8933 Fax (08) 9361 7057</p>			
CLIENT: STANDARD HANDRAIL DETAILS			
DETAIL: ALUMINIUM/STAINLESS STEEL STANCHION WELDING			
WEBFORGE QRD TYPE	SURFACE TREATMENT	REQ'N No.	STD - 101/0
DRAWN TAW	CHK	CUST. QN.	DRAWING No. STD - 101AS
DATE 11/94	JOB No.		REV. 1